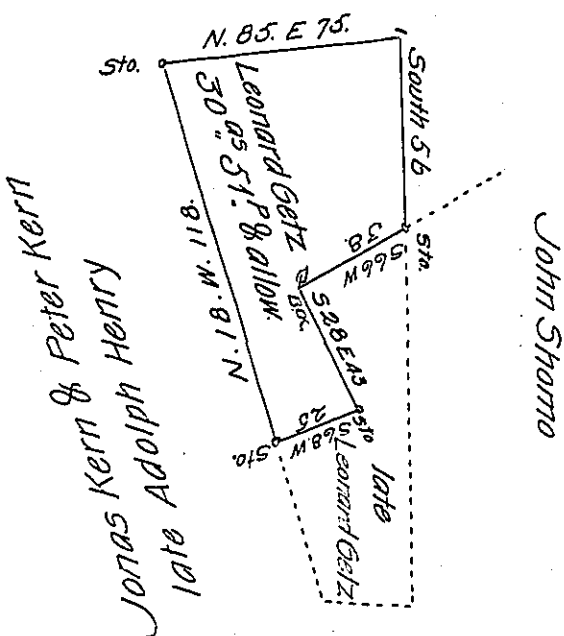


George Miller



Jonas Kern & Peter Kern  
late Adolph Henry

John Shomo

Situate in Windsor Township, Berks County Containing thirty Acres and fifty one perches & the allowance of six per Cent for Roads & C part of a larger tract of forty seven Acres and fifty one perches and allowance surveyed to Leonard Getz in pursuance of a warrant dated the 2 (obl.) December 175 (o. b. l.) vided the 17<sup>th</sup> December 1815 for Jonas Kern and Peter Kern.

pr. John M. Hyneman D.S.

To Rich<sup>d</sup> T. Leech Esqr }  
Sur Genl. Pennsy<sup>a</sup> }

IN TESTIMONY that the above is a copy of the original remaining on file in the Department of Internal Affairs of Pennsylvania, made conformably to an Act of Assembly approved the 16th day of February, 1833, I have hereunto set my Hand and caused the Seal of said Department to be affixed at Harrisburg, this Sixteenth day of November 1904.

*Joseph P. Brown*  
Secretary of Internal Affairs.